

KINGS COMMUNITY

KCAO

ACTION ORGANIZATION

2014 Annual Report



the
FACES
we impact

Table of Contents

Mission Statement3

Vision Statement3

Board of Directors4

Senior Management & Staff5

Letter from Executive Director6

Departments & Highlights

Child Care Assistance Programs.....7

Head Start / Child Development.....8

Intervention, Prevention & Support Services9

Nutrition Education & Hunger Prevention.....10

Operations11

Allocations of Funds12-13





Mission Statement

Working as a team, KCAO will seek and provide programs that develop self-sufficiency in individuals, families, and communities within Kings County.

Vision Statement

Kings County residents and communities will achieve self-sufficiency through the high-quality and client-focused programs of KCAO.

Board of Directors

Public Sector

Richard Fagundes	Kings County Board of Supervisors
Raymond Lerma (Chairperson)	City of Corcoran
Edward Neal	City of Lemoore
Gary Pannett (Vice-Chairperson)	City of Hanford
Melissa Whitten	City of Avenal

Private Sector

Elsie Barba (Secretary)	First Christian Reformed Church
Tim Bowers (Treasurer)	Kings County Office of Education
Clarence Cryer Jr.	Kings County Latino Round Table
Cheryl Silva	Hanford Joint Union High School District
Don Wright	Hanford Sunset Rotary

Targeted Sector

Alicia Jacobo	Kettleman City/Santa Rosa Rancheria Census Tract 16
Sal Lopez	Hanford Census Tract 8 & 9
Jess Martinez	Corcoran Census Tract 13, 14, & 15
Gabriel Venegas	Hanford Census Tract 11
Vacant	Avenal Census Tract 17

Senior Management



Jeff Garner
Executive Director



Glenda Stephens
Deputy Executive Director



Taylor Clanton
Director - Nutrition Education
and Hunger Prevention Department



Joey Cox
Director - Intervention, Prevention,
and Support Services Department



Michelle Dove
Director – Head Start and
Child Development Department



Saul Leal
Director - Operations Department



Sara Lorah
Director - Fiscal Department



Ruth Rodriguez
Director – Child Care
Assistance Department



Ron Torres
Director – Human Resources Department

Letter from Executive Director

Dear Community Members,
We are delighted for the opportunity to share with you the accomplishments and impact that we have made this past year. 2014 served as KCAO's forty-ninth year of service and we have continued with our mission to help Kings County residents reach and maintain self-sufficiency. In this annual report you will read about the collaborative spirit that KCAO has in working with our funders and community partners, the determination of our staff and board members to build and adapt our programs to meet the challenging needs found in Kings County, and an unwavering commitment to help build the lives of individuals who seek to reach self-sufficiency.

In 2014 the Board of Directors adopted a new vision statement that has helped chart a course of purposeful action for KCAO staff and volunteers. The new vision statement describes Kings County residents and communities achieving self-sufficiency through the high-quality and client-focused programs of KCAO. We have embraced this vision as exemplified in our role to usher in new services that target households that have been impacted by the severe drought. KCAO worked with Federal, State and local officials to streamline resources and remove barriers to help 1,500 drought-impacted households to access services. Drought relief assistance is just one of many successful programs and services that we operated in 2014. With the new vision statement, KCAO will coordinate services and develop programs that are focused on operating at a high level and are designed to meet the changing needs and circumstances of Kings County residents and communities. We have a lot of work ahead of us and our accomplishments in 2014 will serve as a springboard for this upcoming year.

Child Care Assistance Programs

The Child Care Assistance Programs Department is comprised of four major components:

- Alternative Payment Programs
- The Kings County Child Care Eligibility List
- Kettleman City Family Resource Center
- Resource & Referral

Under these programs families, children, teachers and community agencies are offered numerous resources in the areas of child care consumer education, placement into subsidized child care, starting or enhancing their child care business, and promoting early childhood education.

The Toy Lending Library is also available to the public to checkout educational resources and to use the available materials to complete projects for their classrooms and/or businesses at a fee.



Highlights

KCAO paid a total of \$2,973,025.90 in provider payments for Kings County child care providers in 2014.

The Child Care Assistance and Center Programs served 1,188 children and 668 families in 2014.

Resource and Referral has offered the community and ECE professional's professional growth hours throughout the year. For FY 2013-2014 R&R has delivered 90.5 hours of training with 283 individual participating in training with the support from the following funding sources: CCIP, Health and Safety, and UC Davis: Family Child Care at its Best.

Child Care Initiative Project (CCIP) works to recruit, train and improve the quality of child care in Kings County through outreach, training and technical support. The CCIP grant has made it possible to recruit 10 new providers for 2013-2014 year; this has helps us achieve our contract goal. By obtaining their Child Care Licensed through Community Care Licensing Kings County has increased the child care capacity by 80 slots for infant, toddlers, preschool, and school age children.

The Kettleman County Family Resource Center was awarded the Kings County First 5 Commission Contract for \$90,000.

The Family Resource Center served 770 clients (duplicated number) with services ranging from application assistance, emergency food distribution, clothing, referrals and parent education classes.

The Kettleman Resource Center provided services to children 0-5 years of age and their families. Further purposes to promote, support, and improve the early development of children from the prenatal stage to five years of age. The program served 133 children (unduplicated) 0 to 5 years of age during 2013-14 FY.

Head Start/Child Development

The Head Start Program is a program of the United States Department of Health and Human Services that provides comprehensive education, health, nutrition, and parent involvement services to low-income children and their families.

Head Start is made up of five crucial programs

- Early Head Start
- Migrant Head Start
- Regional Head Start
- Center-Based Programs
- Early Head Start – Child Care Partnership

With each one of these important components being provided, every child and family is one step closer to living healthy and self-sufficient lives.



Highlights



\$ 6,305,582 received in Federal Funding for Head Start

Regional & Early Head Start \$4,883,567
Migrant/Seasonal Head Start \$1,422,015

\$1,576,396 received in In-Kind Funding for Head Start

Regional & Early Head Start \$1,220,892
Migrant/Seasonal Head Start \$355,504

Children Served Per Program

Regional Head Start: 683
Early Head Start: 88 children and 9 pregnant women
Migrant/Seasonal Head Start: 172

Families Served Per Program

Regional Head Start: 601
Early Head Start: 99
Migrant/Seasonal Head Start: 132

Percentage of Enrolled Children that Received Medical and Dental Exams

Regional Head Start: 71% (M) and 87% (D)
Early Head Start: 61% (M) and 72% (D)
Migrant/Seasonal Head Start: 71% (M) and 63% (D)

Intervention, Prevention & Support Services

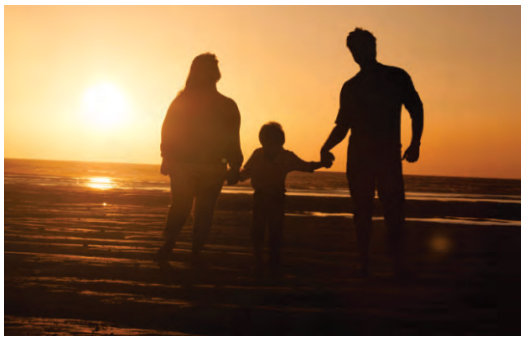
Intervention, Prevention and Support Services is the department responsible for keeping Kings County safe and helping those with problems related to sexual assault, domestic violence and homelessness.

The Intervention, Prevention and Support Services Department is made of several programs which fall under two categories: Crisis Support Services and Youth Services. Crisis Support Services is for victims of domestic violence, sexual assault and households where child abuse and neglect are present.

Youth Services provides case management and numerous programs and services to youth and young adults from 9 to 20 years of age who want to make positive choices allowing them to become independent and productive adults.



Highlights



KCAO assisted 132 clients with temporary restraining orders (TRO).

103 homeless women and 62 children, as well as 35 survivors of domestic violence, utilized the Barbara Saville Women's Shelter in 2014. The women utilizing the shelter received job training services, housing assistance, and child care assistance all for the purpose of helping them build a life of self-sufficiency.

Received over 380 Crisis Line calls for sexual assault, domestic violence, the Barbara Saville Women's Shelter and general crisis support information.

19 of the 37 teen parents served in AFLP and Cal Learn were able to graduate high school. The 51% graduation rate one was the highest rate that the programs have ever achieved.

The Youth Learning with Engagement to Achieve Dreams (L.E.A.D.) Program served 294 youth in 2014. 74% of the youth are from low to extremely low income families. In 2014 the Youth Employment Project started and 10 youth have been employed in jobs at KCAO. Since starting the program in 2013 the program has seen youth improve academically, socially, and developmentally.

Nutrition Education & Hunger Prevention

The Nutrition Education and Hunger Prevention Department (NEHP) consists of programs categorized into the three following domains: Supplemental Nutrition Assistance Program Education (SNAP-Ed), Day Care Homes Food Program (CACFP), and Summer Food Service Program (SFSP).

Youth Services provides case management and numerous programs and services to youth and young adults from 9 to 20 years of age who want to make positive choices allowing them to become independent and productive adults.



The SNAP-Ed program provides physical activity and nutrition education to qualifying families and community-based organizations/centers. The program also strives to work with worksites, schools and community centers to create healthful environments that support healthy fruit and vegetable consumption as well as daily physical activity. The SNAP-Ed Program received a three year grant totaling \$1.374 million. The grant will be instrumental in helping KCAO to continue to provide nutritional education services to Kings County residents. The program has provided direct and indirect education to over 3,000 individuals already and continues with its efforts throughout the communities of Kings County. These individuals were introduced to nutritional and physical activity concepts that will assist them in living healthier lives. KCAO conducted nutritional workshops at our Head Start Centers, Kings County Behavioral Health, Tamarac Elementary School, Reef-Sunset Junior High School, Oak Wellness Center, Kettleman City Family Resource Center as well as other locations throughout Kings County. Two large projects that are currently in place include the creation of nutrition murals with children attending two schools in Kings County, as well as the creation of three billboards that will be located on Lacey Boulevard in Hanford, Highway 198 in Hanford, and Highway 43 in Corcoran to help support environmental efforts of healthy messaging.

The Day Care Homes Food Program is one of several food programs under the Child and Adult Care Food Program. DCH provides reimbursement for meals and snacks to licensed family child care providers within Kings

County. Child care must be provided in private homes and targets higher levels of reimbursement to low-income areas, and to care providers and children most in need. Reimbursement is provided for the foods served to small groups of children receiving nonresidential day care and makes the cost of day care more affordable for many lower income families. Care providers active under the DCH program must ensure that meal patterns and foods served meet USDA guidelines. On average, we provide assistance to 37 providers, who have a total enrollment of children of about 268 each month. While each month varies in the number of meals served to these children, typically there are roughly 2,000 breakfasts, 2,400 lunches, 1,300 suppers, and 3,600 snacks served.

The Summer Food Service Program provides free healthy foods to children who are low-income and under the age of 18. The meals must meet federal nutrition guidelines and are typically served in the summer months from June to August. The program provides an opportunity for low-income children who struggle to find a balanced diet during the summer months, access to daily meals. The most commonly served meals are breakfast and lunch. Sponsored meal sites of KCAO include sites in Hanford, Lemoore, and Home Garden in which a total of 9 sites served summer meals in 2014. In addition, KCAO partnered with other local organizations and school districts to ensure that each community within Kings County was served. Lastly, the program served approximately 18,485 meals to children who were on summer break from school in 2014.

Operations

The Emergency Services Department is comprised of three sub-programs:

- 1) Energy Assistance Program
- 2) Hunger Prevention Program
- 3) Weatherization Assistance Program

This department helps the families and individuals of Kings County live in safe and efficient homes while assisting to lower monthly household bills with replacement of energy efficient appliances and much more.

With California facing one of the most severe droughts on record, KCAO was also able to assist low-income families directly impacted by the drought through financial support on water bills to prevent a disruption in their services, assistance with rental payments, as well as providing additional food resources throughout Kings County.



In 2014, KCAO successfully fulfilled its contract by serving families in the Lemoore, Hanford, Armona, Avenal, Corcoran, Stratford, and Kettleman City areas by weatherizing 75 households with energy efficient measures, assisted 48 families with new heating or cooling units, installed solar water heaters in 14 different homes, distributed 18,900 drought food boxes and 19,685 USDA food boxes, provided 5,220 individuals with emergency clothing, provided 80 homes with rental assistance, and prevented 1,700 homes from having their utilities shut off.

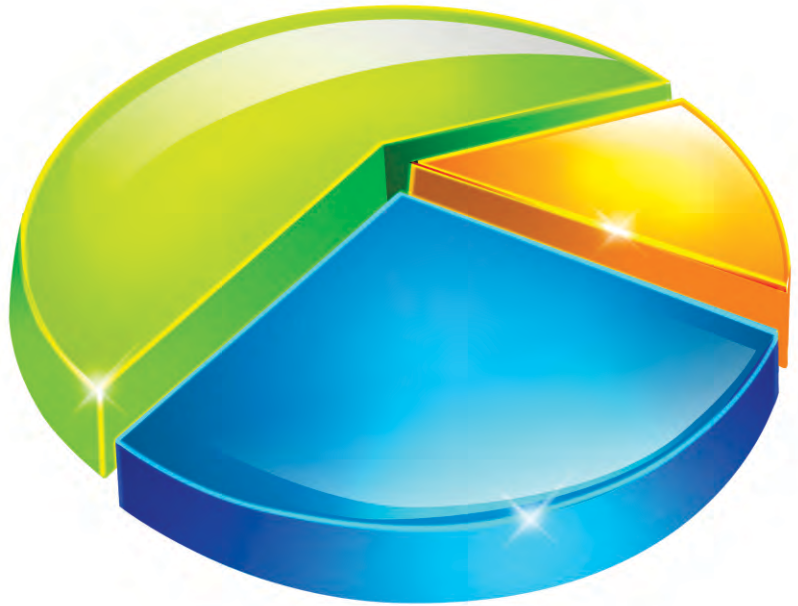
In addition to providing families with these services, KCAO also provided clients with educational materials to help them on 1) budgeting in order to meet their financial goals each month, 2) lead-safe informing of the potential risk of lead hazard exposure, 3) mold and moisture on how to clean up and prevent mold growth, 4) radon informing of the potential risk of radon and how to lower the level, as well as 5) energy education on how to reduce energy consumption.

By taking steps in reading these materials, families are able to see how simple changes can prove to be a costly asset to their energy bill.

Allocation of Funds

The total revenue and expenses for 2014 (audited)

Revenue = \$17,386,957
 Expenses = \$17,258,940



Allocation of revenue and expenses by dollar amount and percentage (audited)

Revenues and Support:

Grants	88.54%	\$15,394,547
Donations	0.66%	\$114,582
Special Events	0.21%	\$36,130
Fee for Services & Other Programs	5.16%	\$897,339
Rental Income	0.02%	\$3,709
Other Income	0.66%	\$115,281
In-Kind	4.75%	\$825,369

Expenses by Programs:

Head Start	45.67%	\$7,882,353
Child Development	39.45%	\$6,807,955
Energy & Housing	1.98%	\$340,975
Intervention, Prevention & Supportive Services	5.00%	\$863,141
Emergency Services	2.72%	\$470,028
Administration	5.18%	\$894,488


Allocation of Funds

Number of contracts that were administered

41 contracts

Major Funders

Adventist Health
Arlena Luna
Avenal Community Health Center
Bacome Insurance Agency
Bank Of America
Bank Of The Sierra
Buford Oil Company
Blue-Shield Foundation
California Association of Food Banks
California Department Of Public Health
California Department Of Social Services
California Office Of Emergency Services
California Department Of Education
California Department Of Community Services
And Development
Calviva Health
City Of Hanford
Comcast Business
Farella Braun Martel
First Christian Reformed Church
First Presbyterian Church
First Solar Development
Fresno Regional Foundation
Garcia Farms
Griswold, La Salle, Cobb, Dowd, & Gin, Llp
Kings County Human Services Agency
Heather & Charles Cadiente
i2i Benefits And Insurance
James & Delia Netto
John & Victoria Tos
Kings County Department Of Public Health
Kings County District Attorney's Office
Kings County Domestic Violence Task Force
Kings United Way
Koinonia Christian Fellowship
Mary Kay Foundation
Nathan & Denise Richard
Chris O'Daniel
Pearson Realty Food Link
Pacific Gas & Electric Company
Rob Walechi
Roll Giving Paramount
Savemart
Second Baptist Church
Soroptimist International Hanford
Southern California Edison Company
Stanley & Pat Neves
The Gas Company
Tim Smith
Triple D Farms
United States Department of Agriculture
United States Department of Energy
United States Dept Of Health And Human Services
Verdegaal Brothers, Inc
W. Clyde Ball Md.
Wells Fargo
Westamerica Bank

A background image of a man in a white shirt holding a baby in his arms. The man is looking down at the baby with a gentle expression. The baby is wearing a white onesie with blue polka dots. The overall tone is warm and caring.

KCAO would like to express our sincerest appreciation
for the contributions from
community members and businesses.

We are deeply grateful for your support and generosity.
It is with the support of individuals, local businesses
and corporate partners like yourself that we are
able to continue to strengthen our programs, and to
develop new and innovative projects to serve our members
and the community as a whole.

KCAO has been and will continue to be a
community-based organization. We want to gratefully
acknowledge the men and women of the Kings County
community who have made our work possible and
continue to help us help Kings County
for the last forty-nine years.

There are numerous ways in which someone can
donate to Kings Community Action Organization,
including monetary donations, matching gifts, pledges,
deferred gifts, gifts of real estate, gifts of securities,
memorial/recognition gifts and volunteering.

For more information about donating to and
supporting KCAO, please contact:

KCAO Executive Office

1130 N. 11th Ave.
Hanford, CA 93230
(559) 415-7202
www.kcao.org